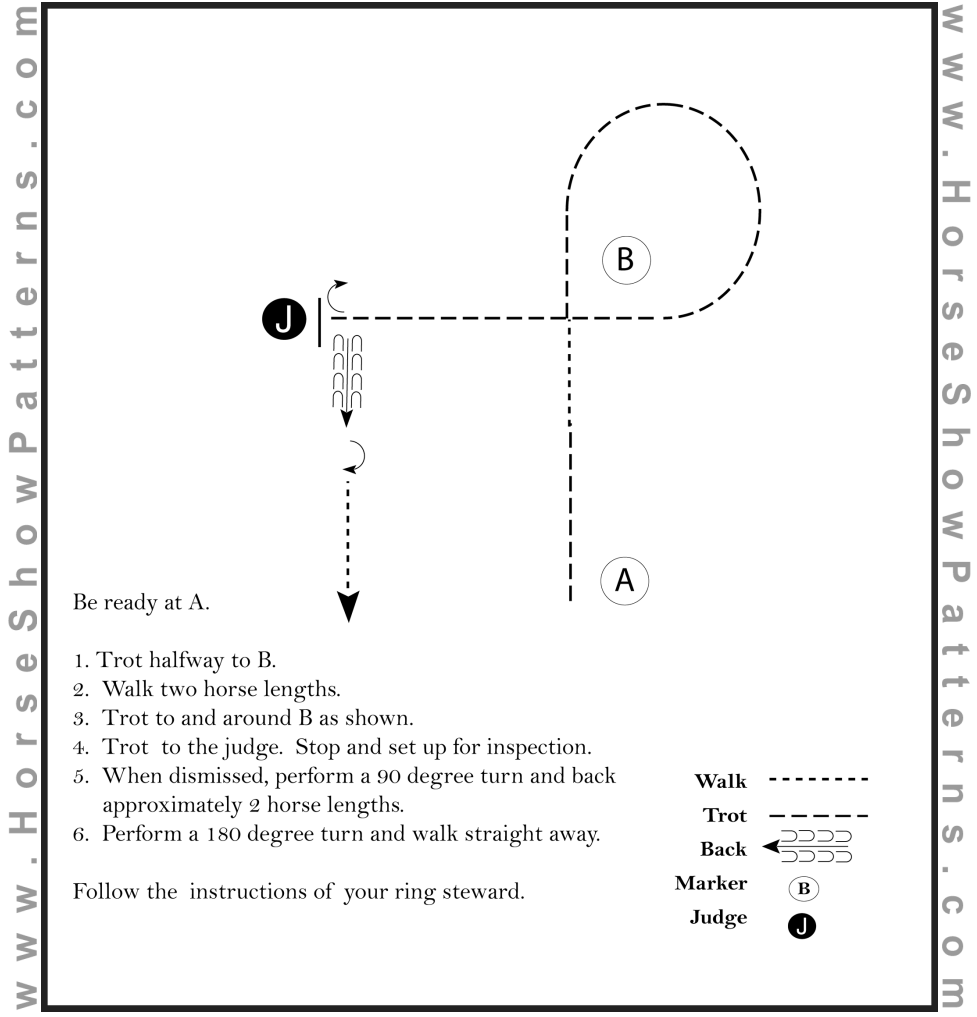
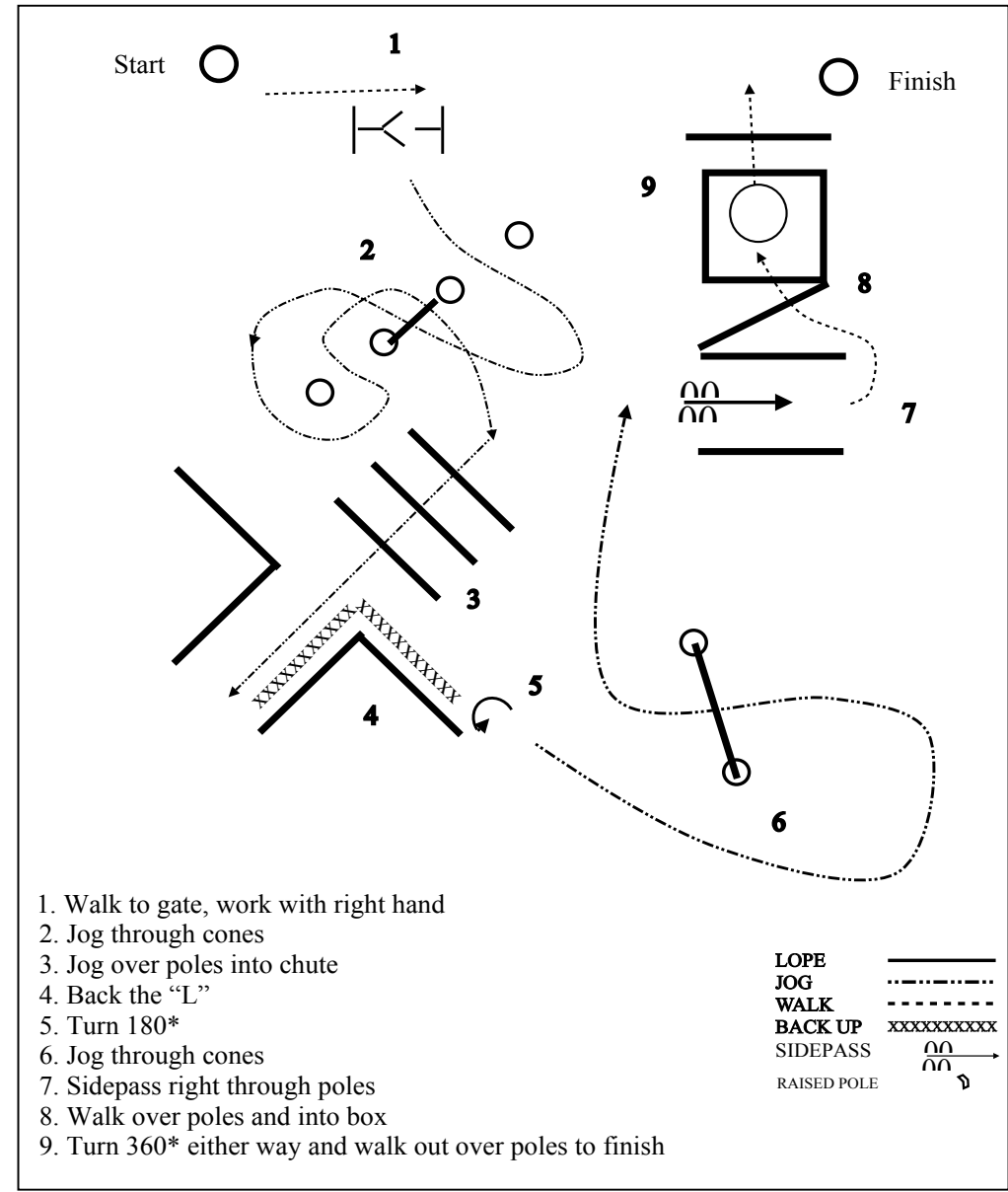


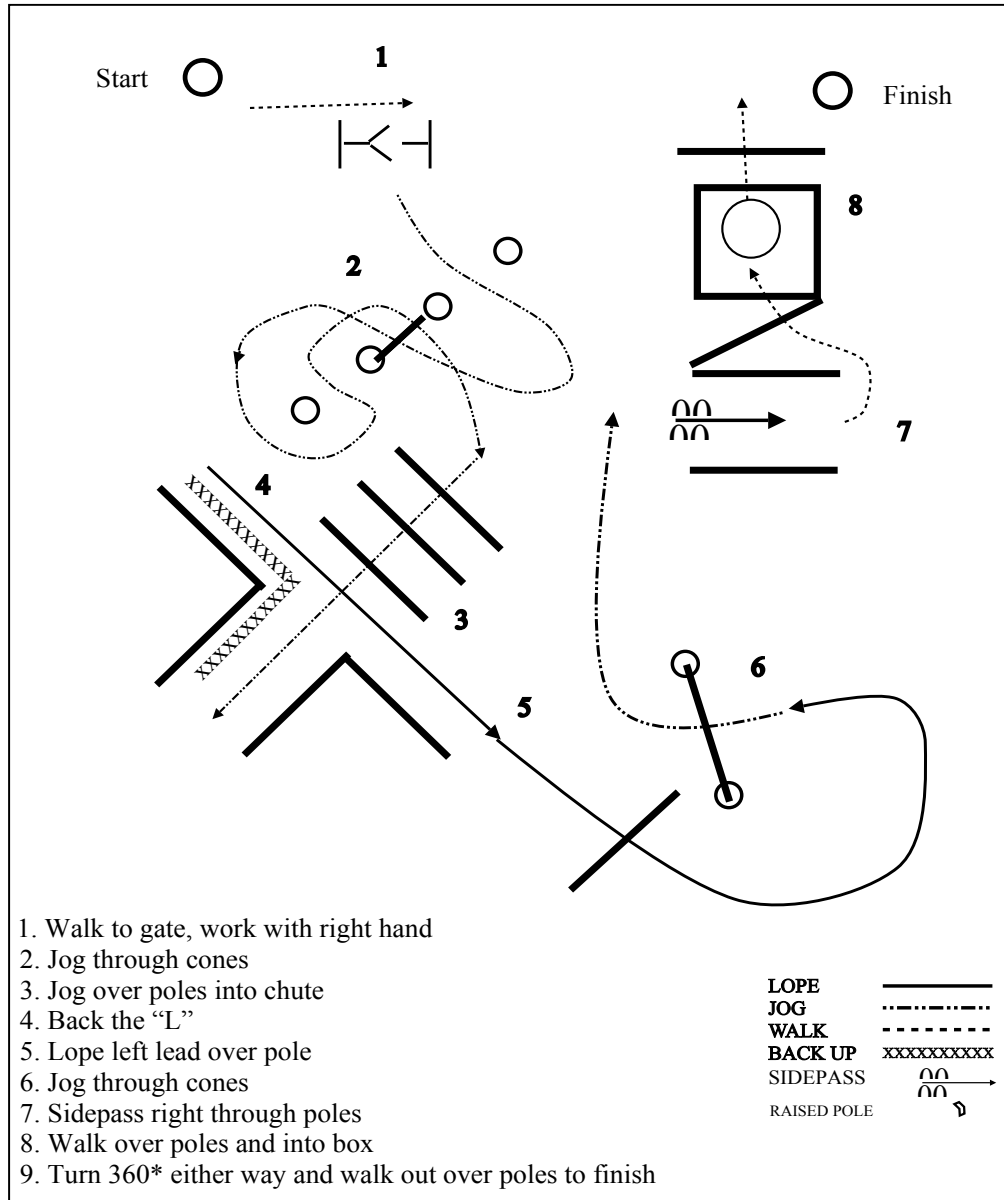
APHC UK SPRING SHOW 2 JUNE  
 CLASS SOW30  
 OPEN SHOWMANSHIP



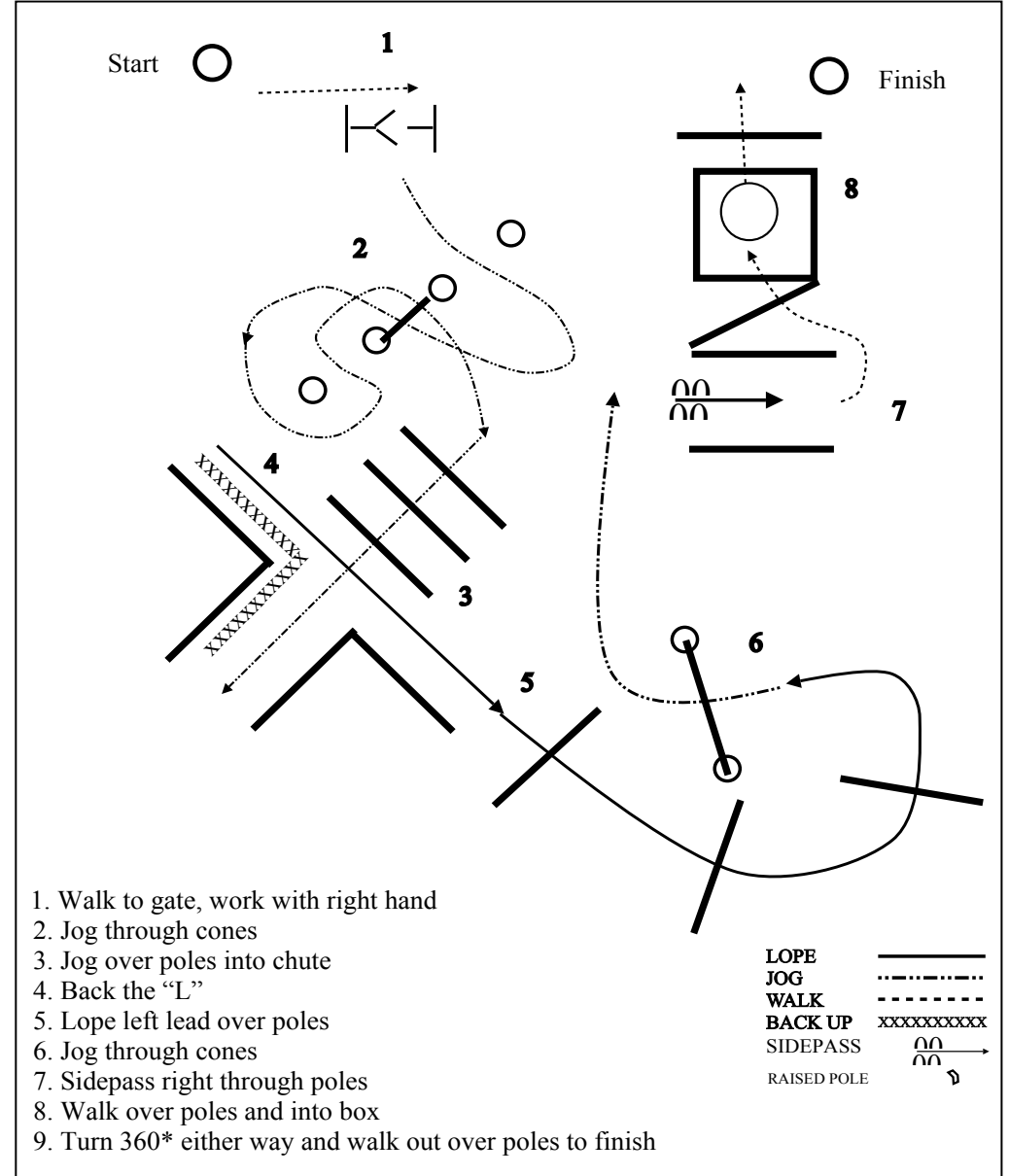
APHC UK SPRING SHOW 2 JUNE  
 CLASS SOW31 IN HAND TRAIL  
 CLASS SOW32 WALK/JOG TRAIL



**APHC UK SPRING SHOW 2 JUNE**  
**CLASS SOW33 NOVICE RIDER TRAIL**  
**CLASS SOW34 NOVICE HORSE TRAIL**



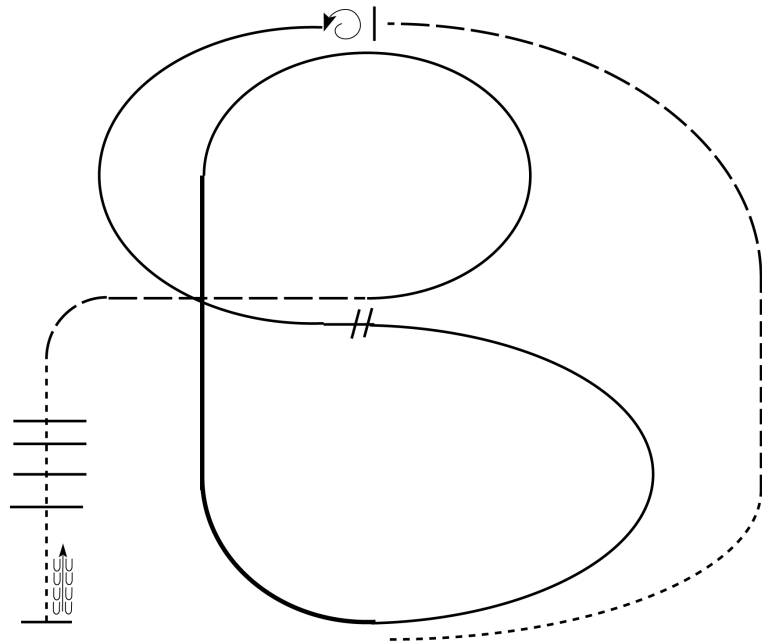
**APHC UK SPRING SHOW 2 JUNE**  
**CLASS SOW35**  
**OPEN TRAIL**



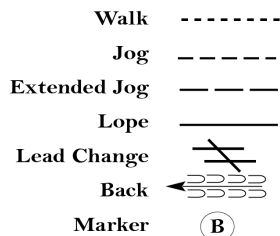
ApHC UK SPRING SHOW 2 JUNE  
 CLASS SOW36  
 RANCH RIDING NOVICE RIDER

www.HorseShowPatterns.com

www.HorseShowPatterns.com



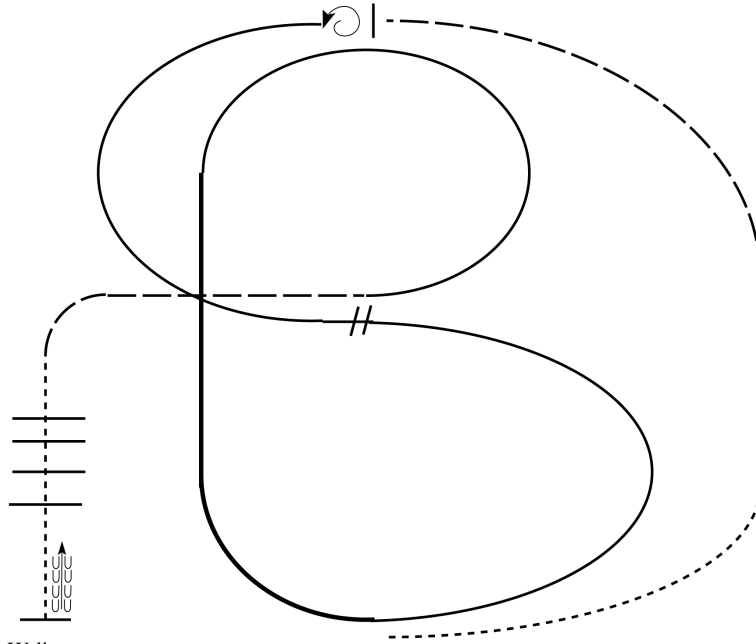
1. Walk
2. Trot
3. Extend the trot, at the top of the arena, stop
4. 360 degree turn to the left
5. Left lead 1/2 circle, lope to the center
6. Change leads (simple or flying)
7. Right lead 1/2 circle
8. Extended lope up the long side of arena (right lead)
9. Collect back to a lope around the top of the arena and back to center
10. Break down to an extended trot
11. Walk over poles.
12. Stop and back



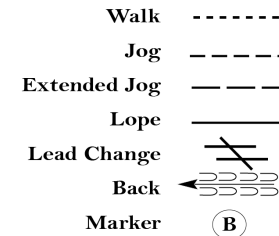
ApHC UK SPRING SHOW 2 JUNE  
 CLASS SOW37  
 RANCH RIDING OPEN

www.HorseShowPatterns.com

www.HorseShowPatterns.com



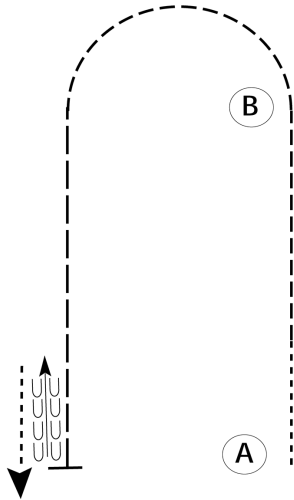
1. Walk
2. Trot
3. Extend the trot, at the top of the arena, stop
4. 360 degree turn to the left
5. Left lead 1/2 circle, lope to the center
6. Change leads (simple or flying)
7. Right lead 1/2 circle
8. Extended lope up the long side of arena (right lead)
9. Collect back to a lope around the top of the arena and back to center
10. Break down to an extended trot
11. Walk over poles.
12. Stop and back



ApHC UK SPRING SHOW 2 JUNE  
 CLASS SOW42  
 WALK/JOG HORSEMANSHIP

www.HorseShowPatterns.com

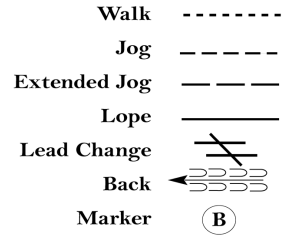
www.HorseShowPatterns.com



Be ready at A.

1. Walk approximately 2 horse lengths from A.
2. Jog to B.
3. Jog in a half circle until even with B.
4. Extend the jog until even with A.
5. Stop when even with A and back approximately one horse length.
6. Walk straight away.

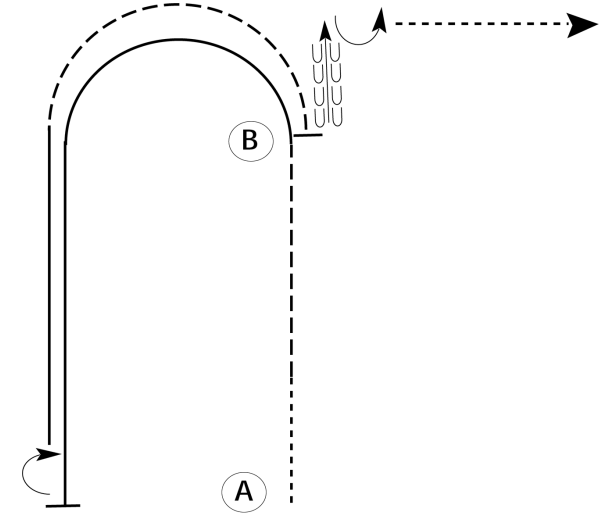
Follow the instructions of your ring steward.



ApHC UK SPRING SHOW 2 JUNE  
 CLASS SOW43  
 NOVICE RIDER HORSEMANSHIP

www.HorseShowPatterns.com

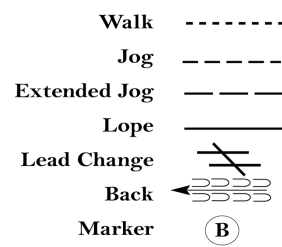
www.HorseShowPatterns.com



Be ready at A.

1. Walk approximately 2 horse lengths from A.
2. Jog to B.
3. Lope on the left lead in a half circle and then straight until even with A.
4. Stop and perform a 180 degree turn to the right.
5. Lope on the right lead until even with B.
6. Jog to B.
7. Stop at B and back approximately one horse length.
8. Perform a 90 degree turn to the left and walk straight away.

Follow the instructions of your ring steward.



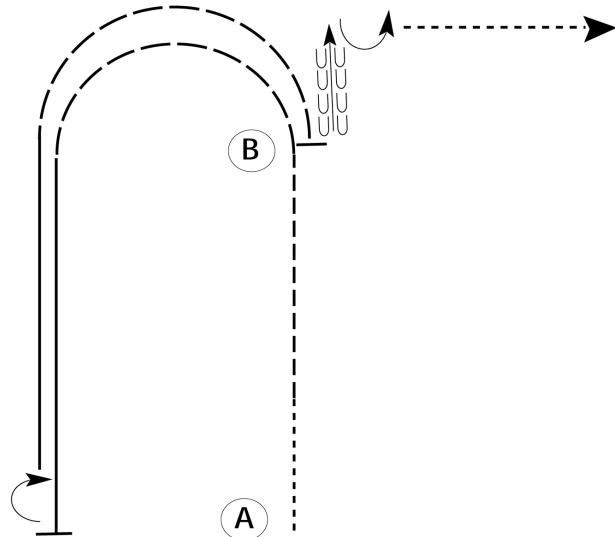
# APHC UK SPRING SHOW 2 JUNE

## CLASS SOW44

### OPEN HORSEMANSHIP

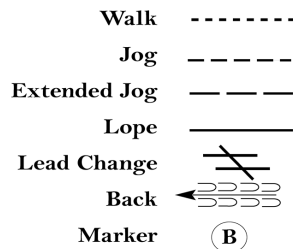
www.HorseShowPatterns.com

www.HorseShowPatterns.com



Be ready at A.

- Walk approximately 2 horse lengths from A.
- Jog to B.
- Extend the jog in a half circle.
- Lope on the left lead until even with A.
- Stop and perform a 180 degree turn to the right.
- Lope on the right lead until even with B.
- Extend the jog to B.
- Stop at B and back approximately one horse length.
- Perform a 90 degree turn to the left and walk straight away.



Follow the instructions of your ring steward.

## APHC UK SPRING SHOW SATURDAY 2<sup>nd</sup> JUNE 2018

Open to APHC USA, & APHC UK registered horses & members (Western Classes OPEN to all breeds)

**MERRIST WOOD ARENA, WORPLESDON, SURREY. GU3 3PE**

JUDGES: Appaloosas – John Conifey    Western – Pauline Brimson

<b>Owner</b>		<b>Telephone No.</b>	
<b>Address</b>			
<b>DOB if Youth</b>		<b>Email Address</b>	
<b>Exhibitor Name</b>		<b>APHC UK Mship No.</b>	
		<b>APHC USA No.</b>	
<b>Horse(s) Name(s)</b>		<b>Age:</b>	
		<b>Sex:</b>	
<b>Breed: (If not Registered Appaloosa - for Open Western classes)</b>		<b>Horse Reg.No.</b>	
		<b>APHC UK</b>	
		<b>APHC USA</b>	
<b>Entry £12.00 each class OR £30 (per 3)</b>		<b>Youth: £7.00 per class</b>	
<b>ENTRIES ON DAY CASH ONLY</b>			
<b>Class No.</b>	<b>Horse's name</b>	<b>Exhibitor (if not as above)</b>	<b>Class Fee £12.00/£30 (3)</b>
		<b>Total Entries</b>	
		<b>*Stable £25.00 Overnight £10 day only Per stable</b>	
		<b>*PLEASE LEAVE STABLE CLEAN</b>	
		<b>£5 FIRST AID FEE PER ENTRY</b>	<b>£5.00</b>
		<b>Total</b>	

Please make cheques payable to **Appaloosa Horse Club (UK) or APHC UK**

and send to  
**APHC UK SPRING SHOW**  
**Entries Secretary, 18 Cardiff Way,**  
**Abbots Langley, Herts, WD5 0TT.**

Entry Close Date: 26 May 2018

Flu vaccinations are not compulsory at this venue but advisable to prevent the spread of infection.

**I have read and accepted the conditions of entry (Show Rules)**

Signed.....

Also please sign **DISCLAIMER** if you wish to wear (at your own risk) a Western-Stetson-type hat whilst mounted for the Western Classes. **Signed** .....